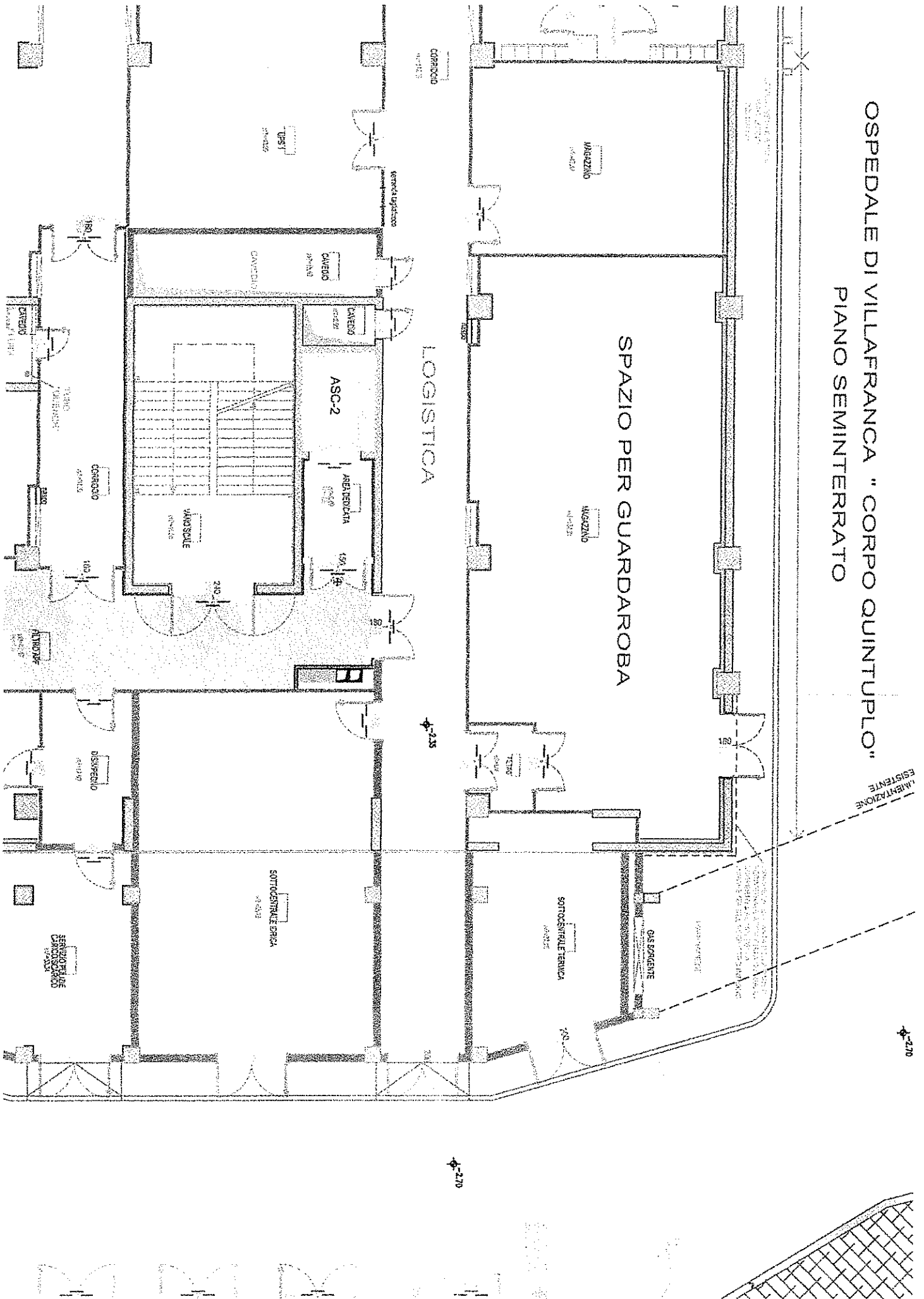


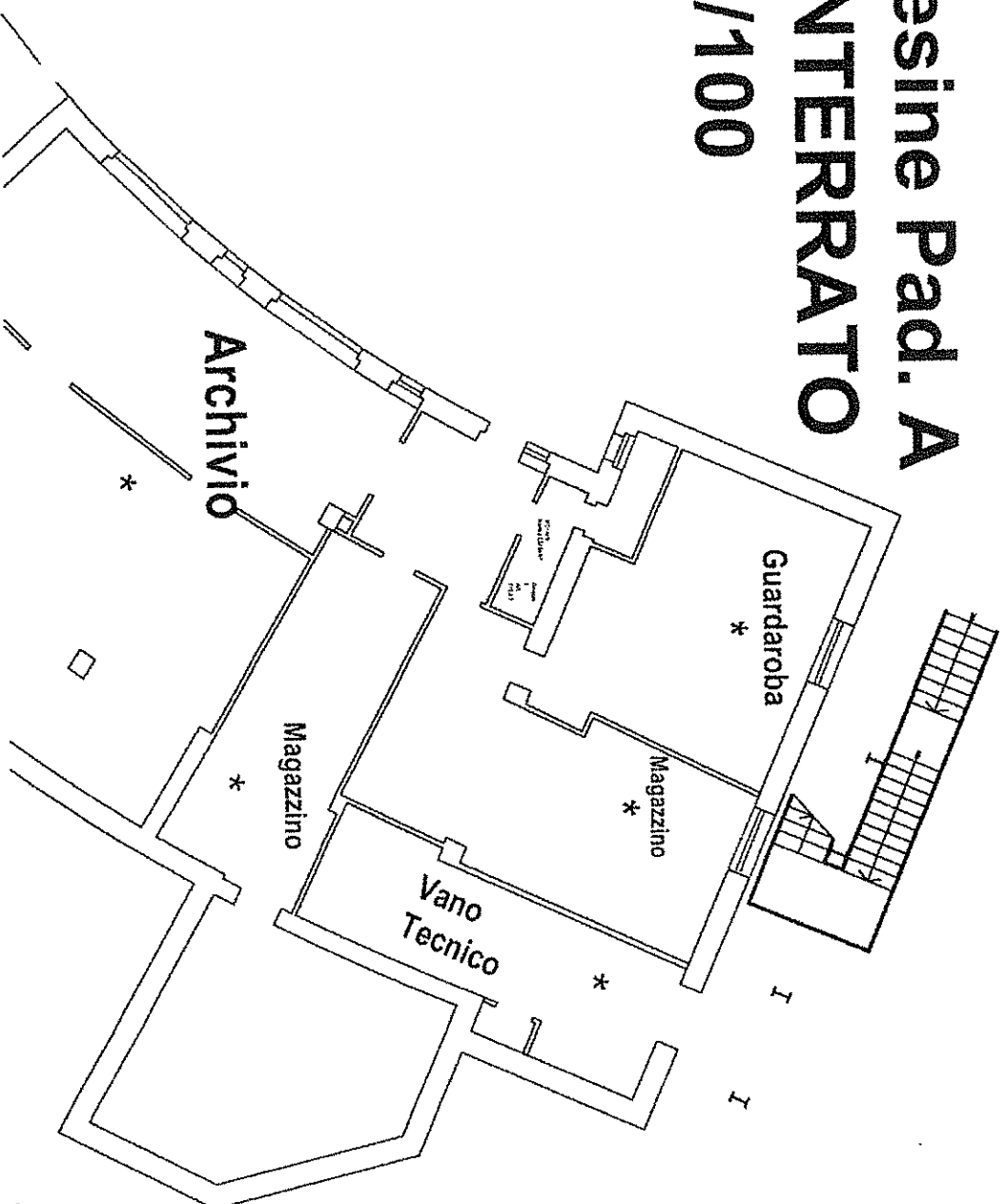
OSPEDALE DI VILLAFRANCA "CORPO QUINTUPLO"  
PIANO SEMINTERATO



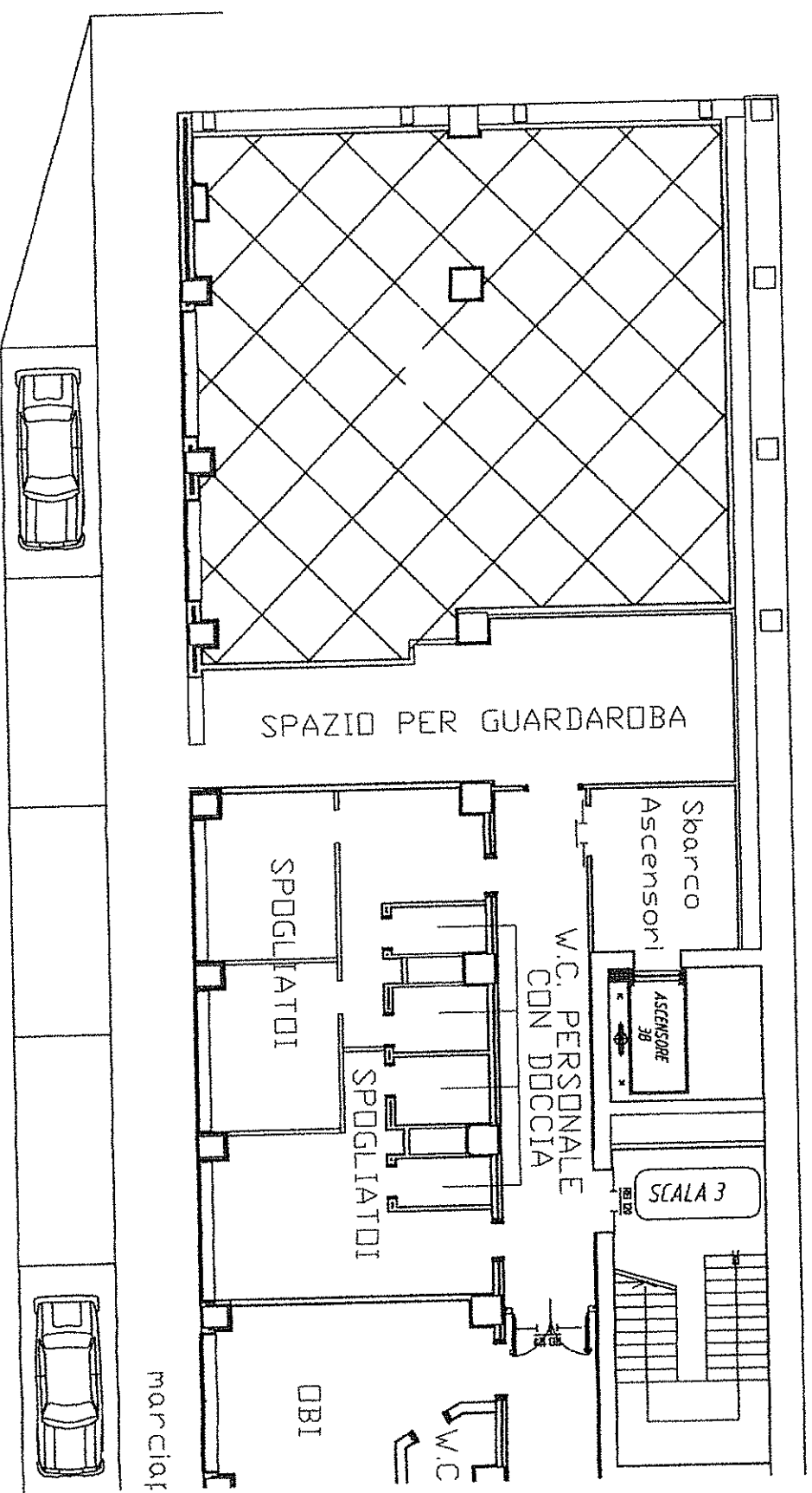
# **Ospedale Malcesine Pad. A**

## **Pianta Piano INTERRATO**

### **Scala 1/100**



# Osp. Bussolengo P. -4



OSPEDALE DI ISOLA DELLA SCALA  
PIANO SEMINTERRATO LATO PRONTO SOCCORSO

